

# 907 Jefferson

Laurel, Mississippi

.77 acres/200 feet of frontage

Prime Interstate 59 Location with easy On/Off access



Offered for Sale:  
~\$22.22 per Sq. Ft.

**HOWARD**  
**JOHNSON**  
PROPERTIES, LLC *for more info*  
[907jefferson.com](http://907jefferson.com) **601.649.2356**



# 907 Jefferson

Laurel, Mississippi

.77 acres

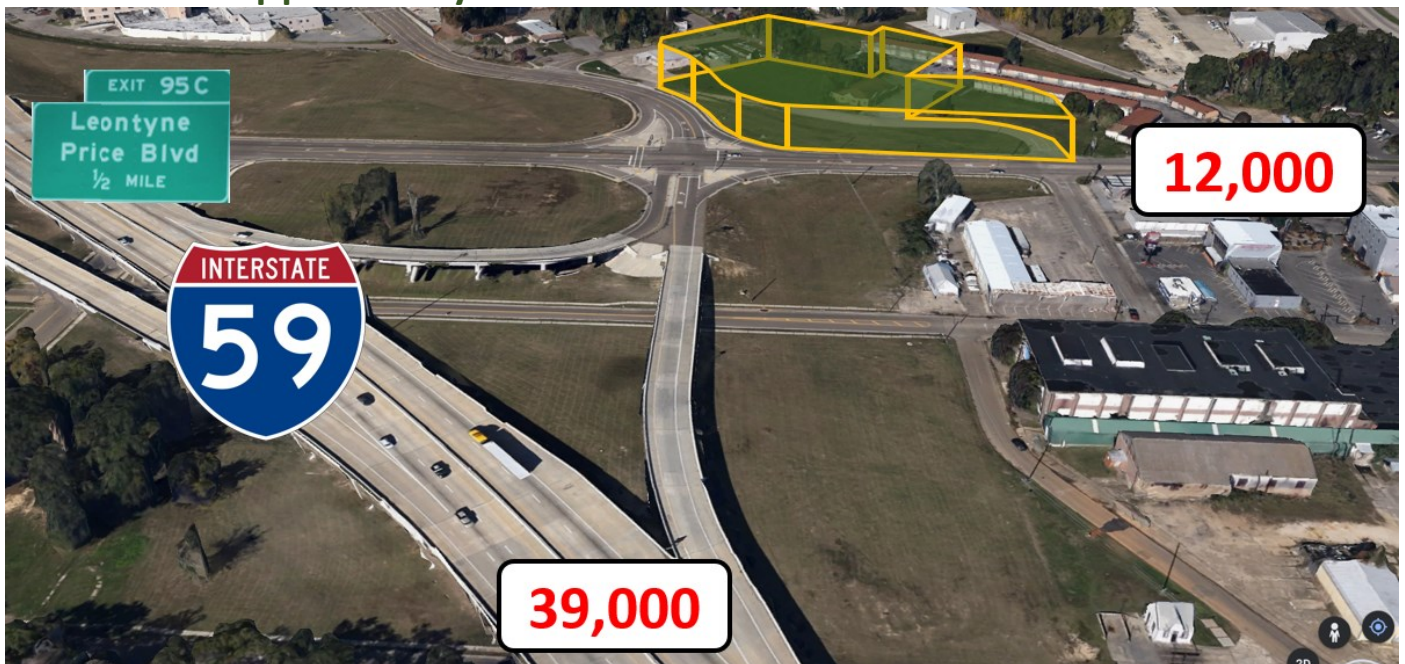
Prime Interstate 59 Easy On-Off Location

## Things to Know

- .77 acres/200 ft. frontage
- Major tourist destination
- >170,000 resident trade area
- 39,000 cars/day I-59
- High Visibility north and south
- Commuting access for area's top employers
- Regional Hospital next door
- HUD Opportunity Zone

## Within 1/3 mile

- S. Central Reg. Med. Ctr
- Jack's Restaurant
- McDonald's
- Burger King
- Church's Chicken
- Popeye's
- Regional Mall/Belk
- Interstate gateway to downtown Laurel



Offered for Sale:  
~\$22.22 per Sq. Ft.

HOWARD  
**JOHNSON**  
PROPERTIES, LLC

*for more info*

[907jefferson.com](http://907jefferson.com)

601.649.2356