

Howard Johnson Properties

HoJoPro.com
Commercial

**816 W. 5th St.
Laurel, MS**



Specific location criteria:

+/- 1,545 sq. ft. building with five offices, kitchen, two restrooms, large hallway for file storage, four parking spaces;

+/- 7,500 sq. ft. lot;

Situated among other professional offices and within walking distance to Jones County Courthouse, City Hall, and Downtown Laurel;

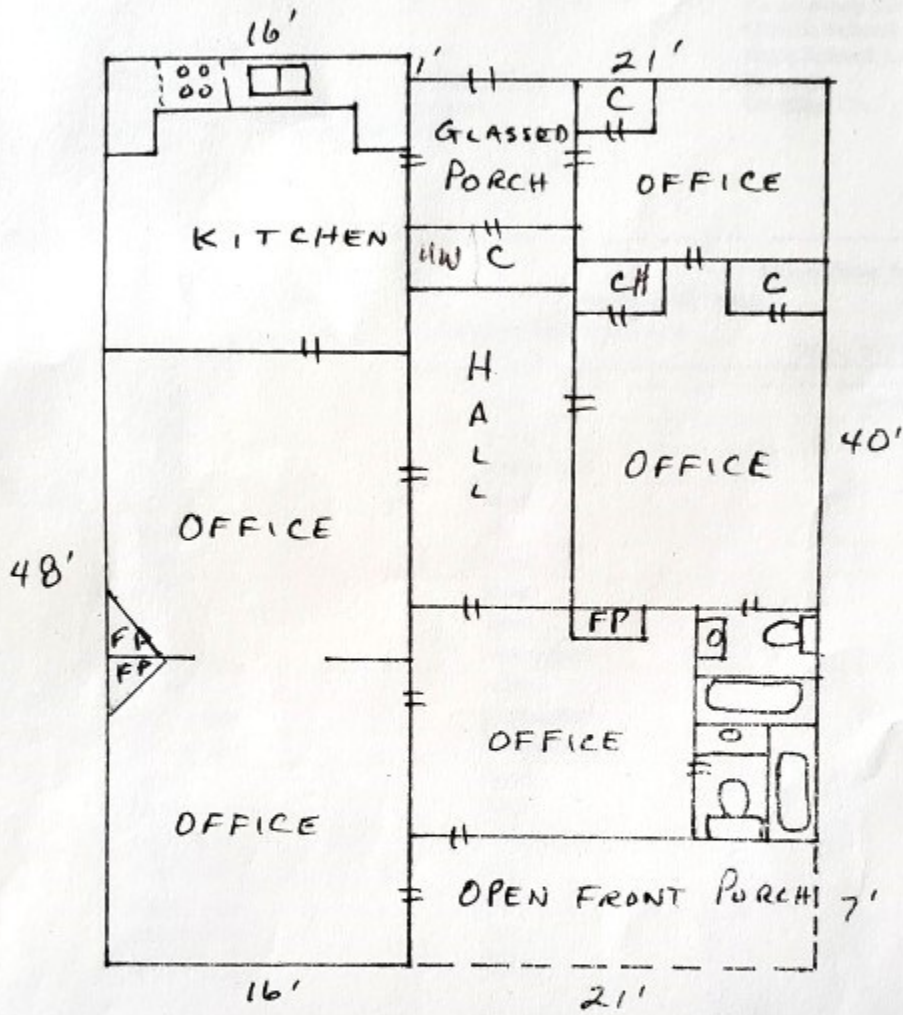
1 mile to I-59

Howard Johnson Properties

HoJoPro.com
Commercial

Richard Green — Managing Broker
601.649.2356 (o) 601.433.8833 (m)
richard@hojopro.com

CLARENCE A. BOONE AGENCY
 816 5TH STREET, LAUREL, MS
 FLOOR PLAN

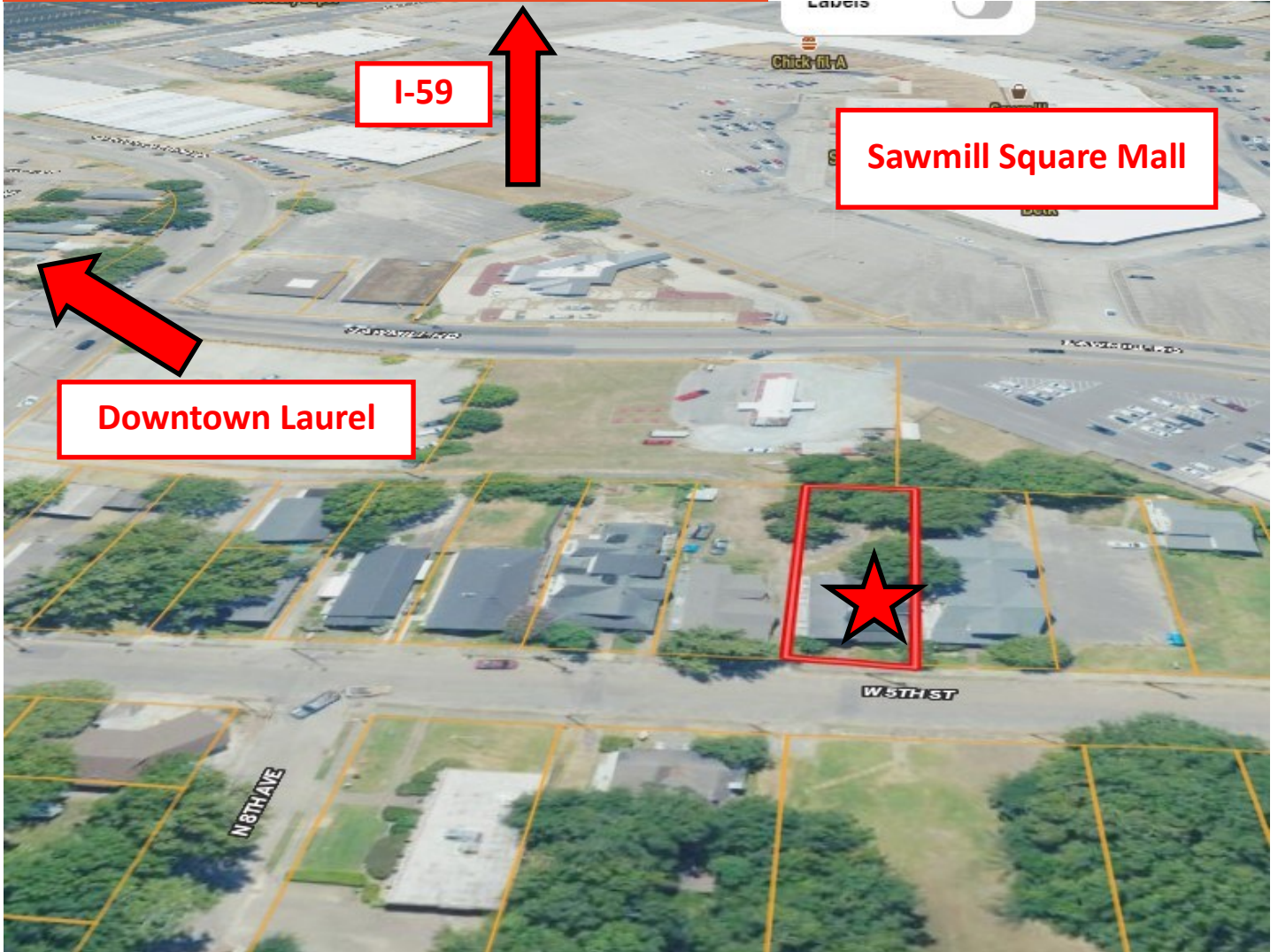


- 1,545 SF Heated/cooled
- 147 SF Open Front Porch
- 63 SF Rear Glassed-in Porch

Howard Johnson Properties

HoJoPro.com
Commercial

**816 W. 5th St.
Laurel, MS**



Howard Johnson Properties

HoJoPro.com
Commercial

Richard Green — Managing Broker

601.649.2356 (o) 601.433.8833 (m)

richard@hojopro.com

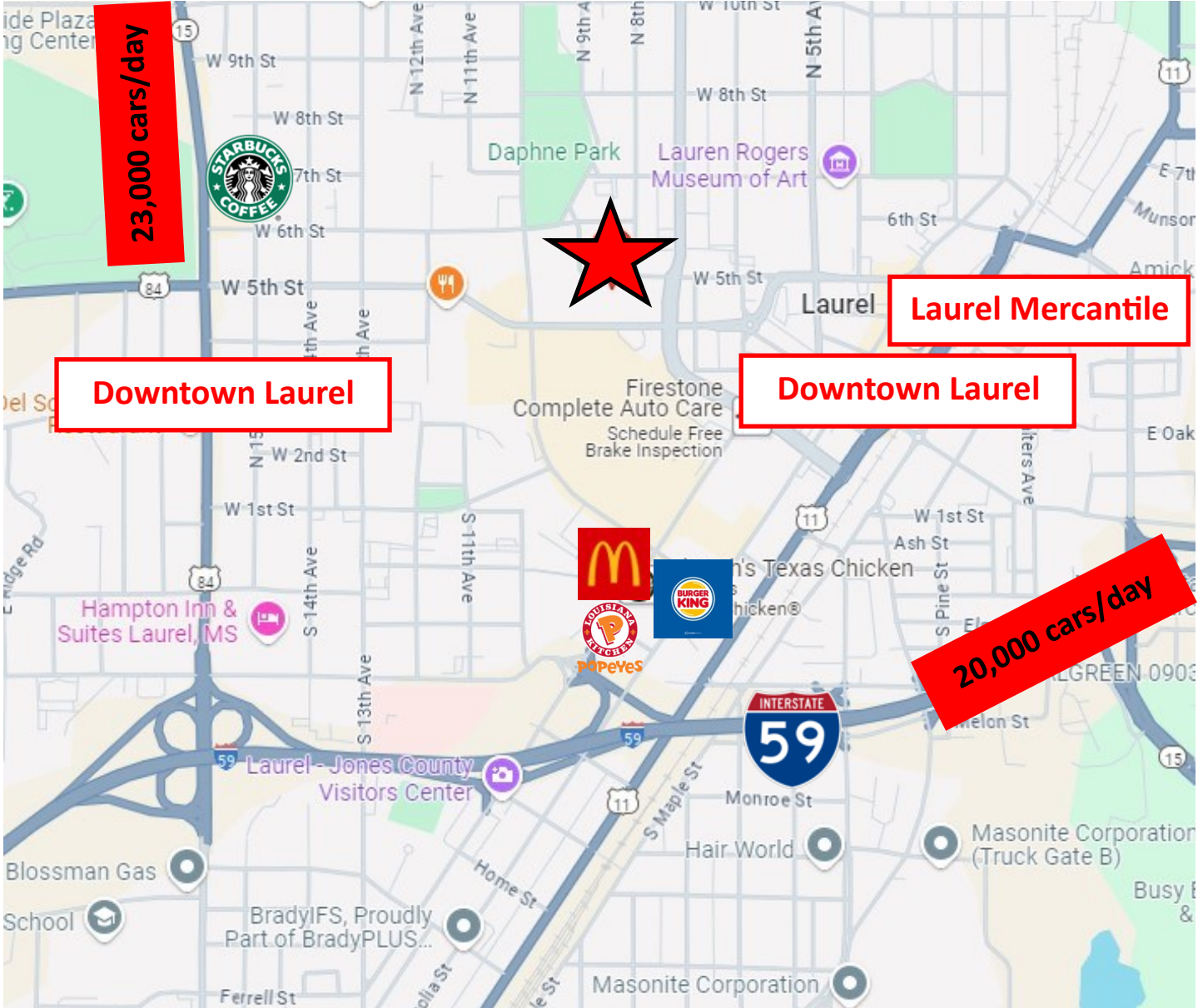
Howard Johnson Properties

HoJoPro.com

Commercial

816 W. 5th St.

Laurel, MS



Howard Johnson Properties

HoJoPro.com

Commercial

Richard Green — Managing Broker

601.649.2356 (o) 601.433.8833 (m)

richard@hojopro.com